

# CAM LOCKS - 16 MM

## ROUND AND SQUARE FACES

### Applications

This lock is ideal for use on drawers and doors.  
Rotating the key results in 90° or 180° rotary cam movement.

### Specifications

- Zinc alloy diecast housing
- Key removable in locked and unlocked positions (B and C movements)
- Key removable in locked position only (S and A movements only)
- Zinc-plated steel cam
- Stainless steel capped barrel
- One pair of nickel-plated keys per lock

### Code Information

#### KEY SERIES

- 01 200 combinations - non-master keying
- 02 200 combinations - master keying
- 07 500 combinations - non-master keying
- 08 500 combinations - master keying
- 11 2000 combinations - non-master keying
- 12 2000 combinations - master keying
- 17 2000 combinations - non-master keying
- 18 2000 combinations - master keying
- CL and FS Special combinations only

#### FINISH

- 3 Bright chrome

#### MOVEMENT

- B 180° clockwise or anti-clockwise to unlock
- S 90° clockwise to unlock
- A 90° anti-clockwise to unlock
- C 90° clockwise or anti-clockwise to unlock

#### FIXING (Refer to page A105 for applications)

- N Nut
- F Across flats spring clip
- R Across rounds spring clip

#### CAM TYPE

- Refer to page A100 (screw fix cam)

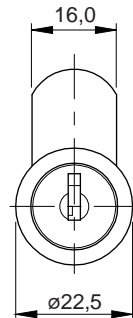


A/CR16

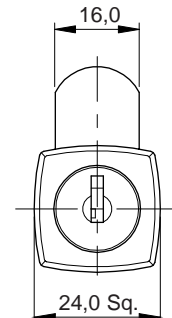


A/CS16

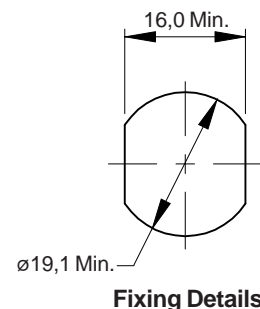
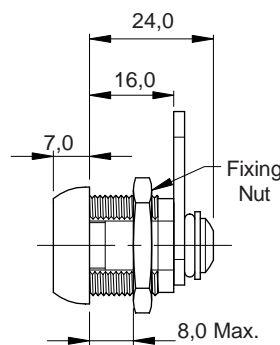
#### Dimensions/Fixing shown NTS



Round Face



Square Face



Fixing Details

#### Measurements shown in mm

### Ordering Details

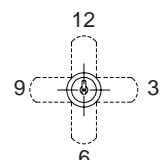
**STEP 1      STEP 2      STEP 3      STEP 4**

**A / CR16 / KEY SERIES / FINISH + MOVEMENT / FIXING + CAM TYPE (Round face)**

**A / CS16 / KEY SERIES / FINISH + MOVEMENT / FIXING + CAM TYPE (Square face)**

**Ordering example: A / C R 1 6 / 0 1 / 3 B / N 0 4**

- **ADVISE** Cam position when locked, refer to drawing at right
- **ADVISE** Keying requirements, e.g. keyed alike
- **SPECIFY** Material thickness if ordering spring clip fixing

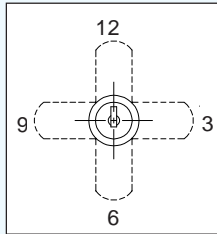


# CAMS - TYPE A

## Ordering Considerations

### 1. LOCKED POSITION

Locked position of cam must be specified as viewed from the front of lock. e.g. 12 o'clock.



### 2. BENT CAMS

For a bent cam, state whether bend is 'stepped away' or 'stepped towards' the lock front.

### 3. NOTCHING AND CAULKING OF CAMS

Notching and caulking of cams to the above details is an additional operation and can be supplied on request.

### 4. NOTCHED CAMS

For a notched cam, state direction to unlock, i.e. clockwise or anti-clockwise.

### 5. OTHER CAM SIZES

Other cam sizes and thicknesses are available on request. We have a large number of cams to suit your particular needs and applications.

## Cam Ordering Codes

Cam No.	Dimension L	Dimension B
01	14,3	
02	19,0	
04	29,4	
06	35,0	
09	44,5	
11	50,8	
13	57,2	
51	29,0	3,2
52	41,0	3,2
53	33,5	4,8
54	50,5	4,8
55	31,0	6,3
57	51,7	8,0
60	39,0	11,1
61	31,1	12,7

### EXAMPLE

The cam lock shown is specified as:

**A / CR16 / 11 / 3 B / N 52**

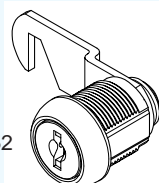
Cam locked at 9 o'clock.

Bent cam to be stepped away.

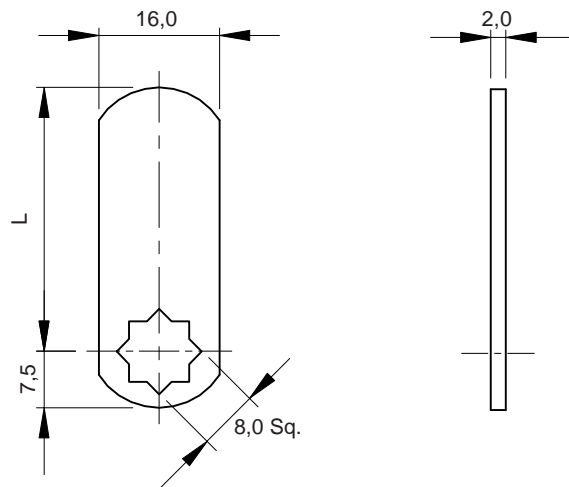
Cam to be notched .

Clockwise to unlock.

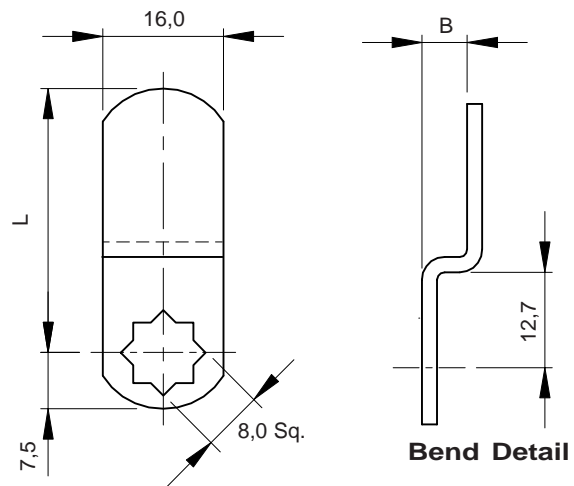
Cam Type 52



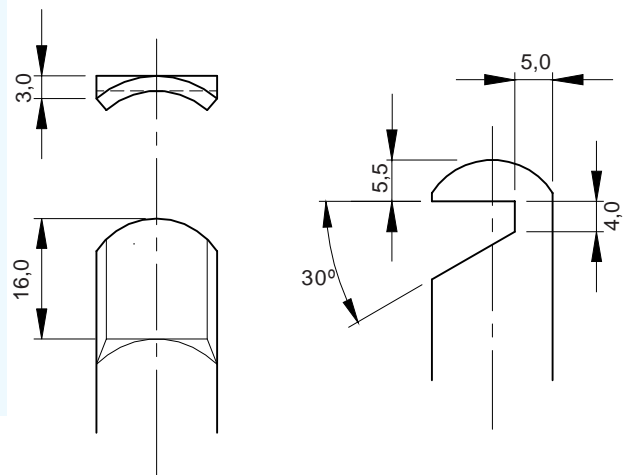
## Standard Cams



## Bent Cam Detail



## Alternative Cam Ends



Dimensions/Fixing shown NTS  
Measurements shown in mm

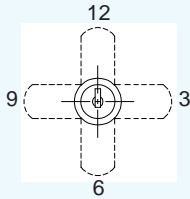
# CAMS - TYPE N

FOR USE ON A/CR11 AND A/CS11 ONLY WITH 11 AND 12 SERIES KEYING

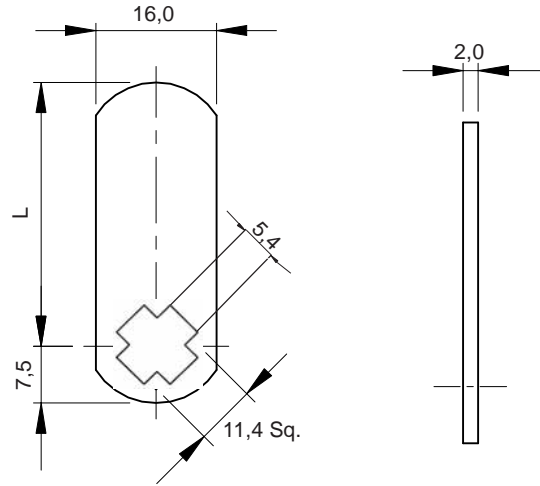
## Ordering Considerations

### LOCKED POSITION

Locked position of cam must be specified as viewed from the front of lock, e.g. 12 o'clock.

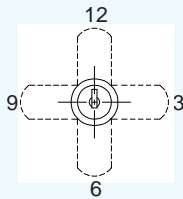


## Standard Cams

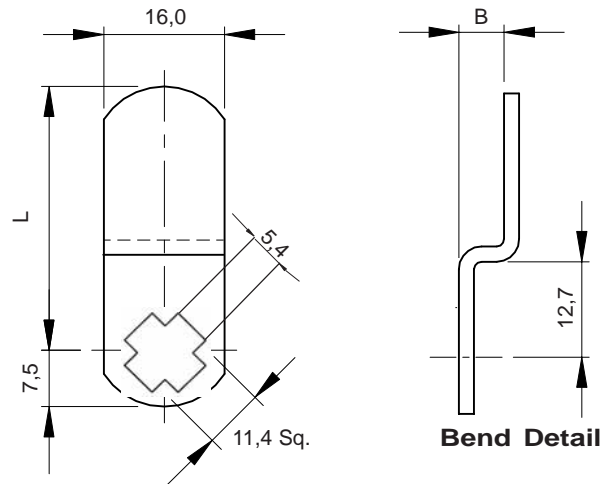


## Cam Ordering Codes

Cam No.	Dimension L	Dimension B
65	28,5	
66	38,0	
67	57,2	
WB	27.5	3.2



## Bent Cam Detail



Ask for available options.

### EXAMPLE

The cam lock shown is specified as:

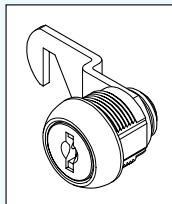
**A / C R 1 1 / 1 1 / 3 B / W B**

Cam locked at 9 o'clock.

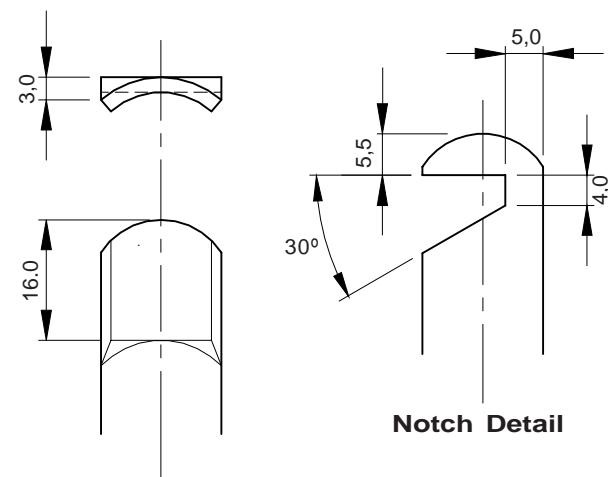
Bent cam to be stepped away.

Cam to be notched .

Clockwise to unlock.



## Alternative Cam Ends



Caulk Detail

Notch Detail

Dimensions/Fixing shown NTS  
Measurements shown in mm

# CAMS - 2-POINT AND 3-POINT LOCKING

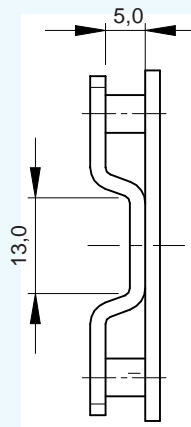
## Applications

These cams are designed for the K4L2 lock.

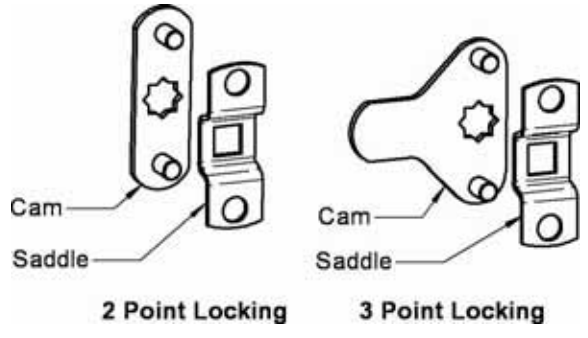
They consist of two pieces: the cam and the saddle. The saddle and cam sandwich the locking rods, thus retaining them whilst still allowing them to swivel.

Cam No.	Dimension L	Dimension B	End Detail
71	37		Flat
72	65		Flat
73	63.5	3,2	Caulked
74	57.5	9,5	Caulked
75	54.5	12,7	Caulked
76	51	16,0	Caulked
2-pt cam	N/A	N/A	N/A

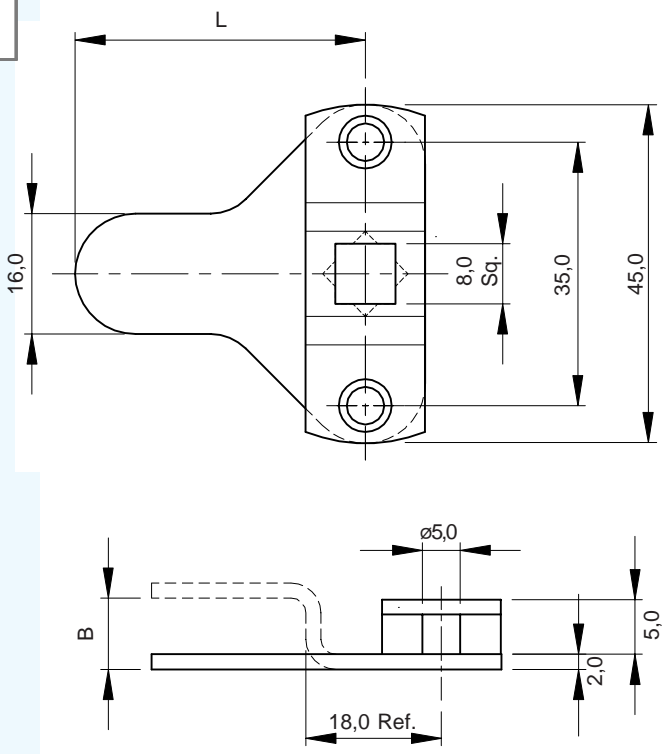
All 3-point locking cams are supplied complete with saddles.



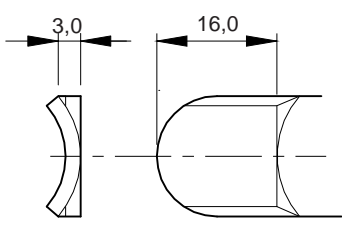
## View from front of lock



## Dimensions/Fixing shown NTS



## Caulk Detail



Measurements shown in mm

# CAM LOCK FIXING TYPES

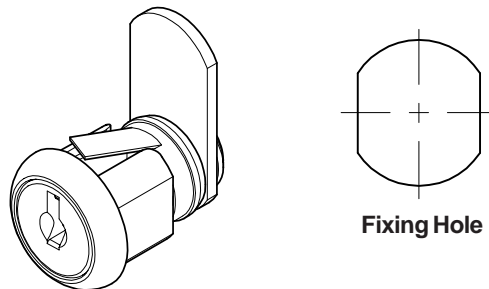
## Metal Fixing for Cam Locks

Suits panels with fixing hole as shown

### QUICK FIX TYPES Q, K, Z AND Y

Fixing types **Q, K, Z** and **Y** are called quick fix. They are only available on housings which are 19 mm to 20 mm long.

They suit metal panels 0.5 to 0.9 mm thick. Options are available.

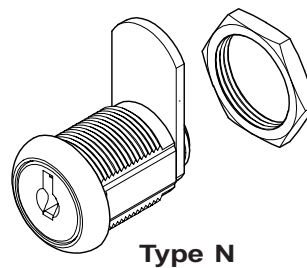


Types Q, K, Z and Y

### NUT FIXING TYPE N

Fixing type **N** is a nut fix. It is very versatile due to its ability to accommodate panels of various thicknesses.

Two widths are available.



Type N

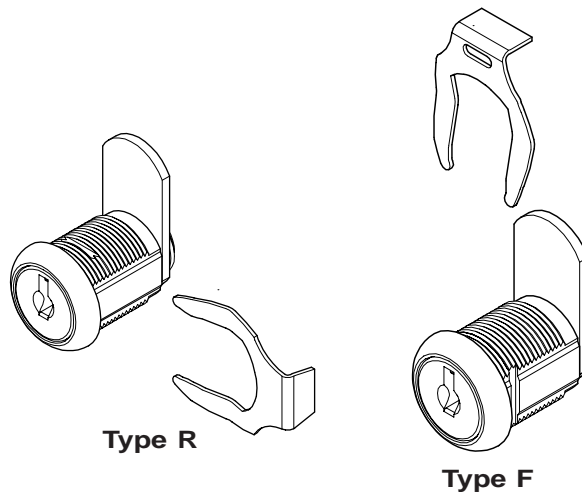
### SPRING CLIP TYPES R AND F

Fixing types **R** and **F** are very similar in their use.

They are ideal in the following situations:

- On housings where quick fix is not offered but where rapid fixing is required.
- Where rapid fixing is required on panels which are thicker than 0.9 mm.
- Where nut fix is not practically possible.

When ordering, the panel thickness has to be specified so that we can machine slots in the correct position on the housing.



Type R

Type F

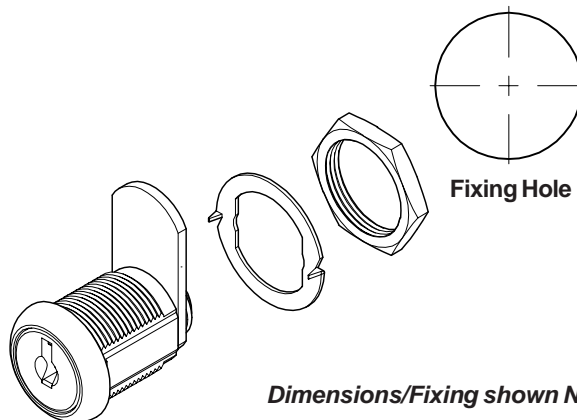
## Wooden Fixing for Cam Locks

Suits timber panels with a round fixing hole

### WOODEN FIXING TYPE W

Fixing type **W** is suitable for wood fixing.

It consists of a nut and pronged washer. The pronged washer bites into the timber when the nut is tightened. This prevents the lock from spinning in a round hole.



Dimensions/Fixing shown NTS  
Measurements shown in mm