

V9 C4 ROLLER DOOR LOCK

KEY OPERATION FROM FRONT - LATCH OPERATION FROM REAR

Applications

This lock is ideal for use on roll-up doors but can also be mounted vertically for sliding door applications.

It is mainly used as a replacement for damaged locks fitted to older doors, and for shutters that require either a restricted or master key system.

The fascia has a 14 mm projection and is secured from the rear of the panel by two screws.

Specifications

- Zinc alloy diecast fascia - satin chrome finish
- Zinc alloy diecast lock - clear zinc-plated
- 19 mm arm throw
- 5-pin brass cylinder (supplied separately)
- For conversion of existing locks, contact Lock Focus for details

Code Information

KEYING DETAIL

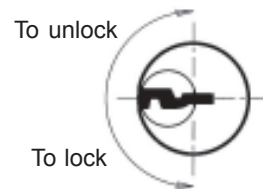
- KA** Keyed alike
- KD** Keyed to differ
- NB** No barrel (pre-loaded cylinder)
- ##** No cylinder



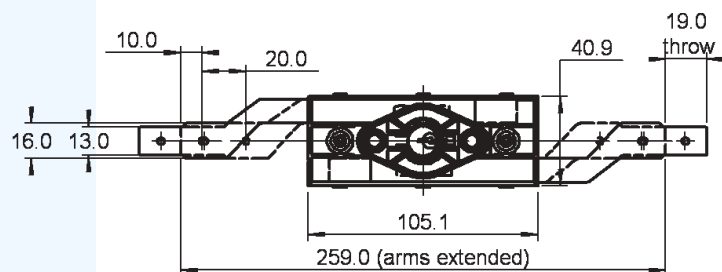
AV9C4
Front view of lock



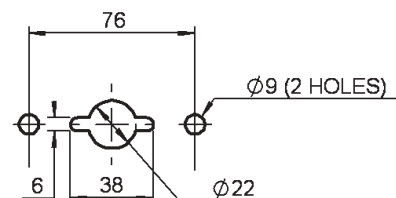
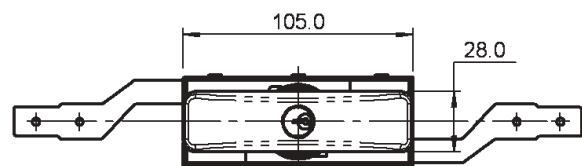
Fascia



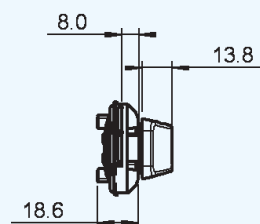
Dimensions/Fixing shown NTS



Front View on Lock with Fascia Removed



Fixing Detail



Side View on Lock and Fascia

Measurements shown in mm

Ordering Details

STEP 1 STEP 2 STEP 3 STEP 4
A / V 9 C 4 / KEYING DETAIL / 4 - / - L L
 Ordering example: **A / V 9 C 4 / K D / 4 - / - L L**