

V4 ROLLER DOOR LOCK

KEY OPERATION FROM FRONT - LATCH OPERATION FROM REAR

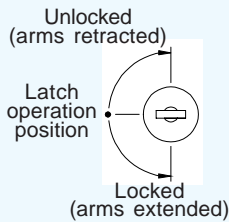
Applications

This lock is ideal for use on roll-up doors.

The fascia features two pockets which provide grip to lift or lower the door.

Specifications

- Zinc alloy diecast fascia - black finish
- Zinc alloy diecast lock - clear zinc-plated
- 19 mm arm throw
- Operation of this lock is described below



This lock can be operated from the front, using a key, or from the rear using the latch. The latch can be operated at all times, independently of any key operation. Key removable in horizontal position only.



AV4P-



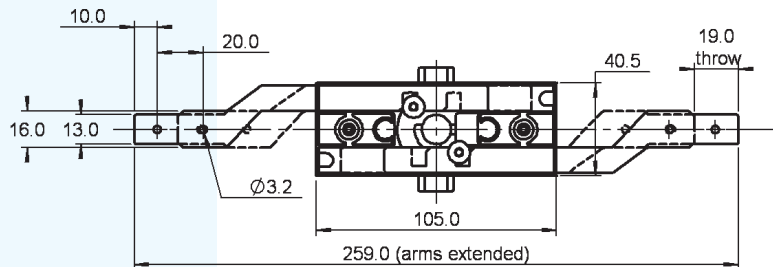
Fascia

Code Information

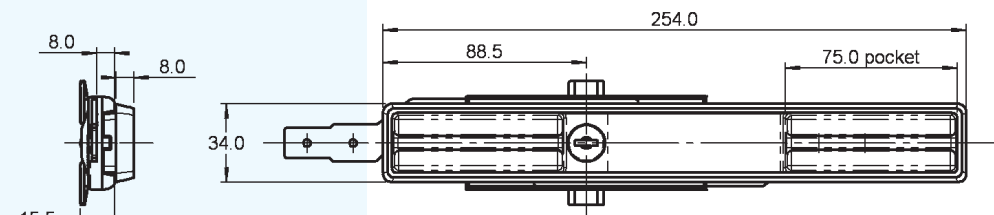
Dimensions/Fixing shown NTS

KEY SERIES

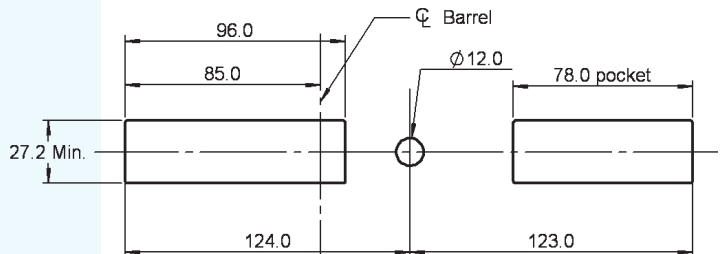
19 100 combinations - non-master keying



Front View on Lock with Fascia Removed



Side View on Lock and Fascia



Fixing Details

Ordering Details

Measurements shown in mm

STEP 1 STEP 2 STEP 3 STEP 4

A / V 4 P - / KEY SERIES / 6 H / L - 6

Ordering example: A / V 4 P - / 19 / 6 H / L - 6