

V1 ROLLER DOOR LOCK

KEY OPERATION FROM FRONT - LATCH OPERATION FROM REAR

Applications

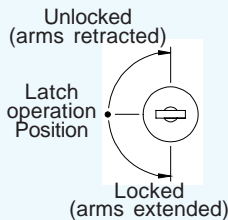
This lock is ideal for use on roll-up doors.

It is used mainly as a replacement for damaged locks fitted to older doors.

The fascia is a traditional design, wrapping around the rib on the door.

Specifications

- Zinc alloy diecast fascia - chrome finish
- Zinc alloy die cast lock - clear zinc-plated
- Key series 19 - 100 combinations
- Non-master keying
- 19 mm arm throw
- Operation of this lock is described below



AV1PB

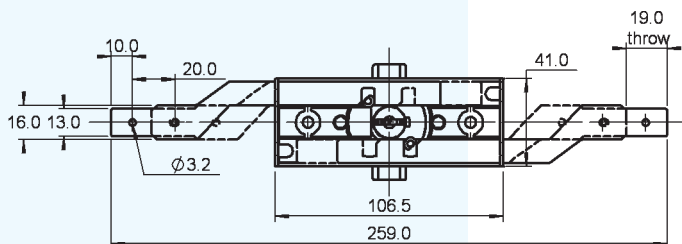


Dimensions/Fixing shown NTS

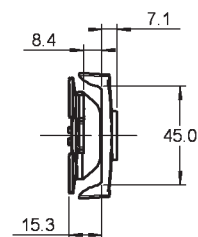
This lock can be operated from the front using a key, or from the rear using the latch.

The latch can be operated at all times, independently of any key operation.

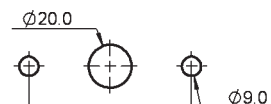
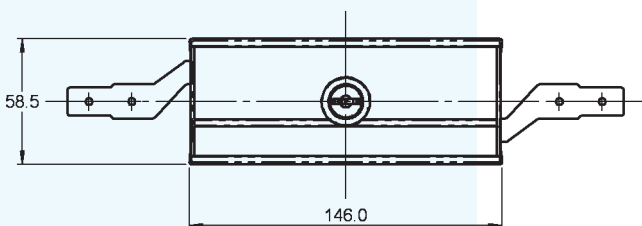
Key removable in horizontal position only.



Front view on lock with fascia removed



Side view on lock and fascia



Fixing Details

Ordering Details

Measurements shown in mm

STEP 1 STEP 2 STEP 3 STEP 4

A / V 1 P B / 1 9 / 3 H / L - 6

Ordering example: A / V 1 P B / 1 9 / 3 H / L - 6